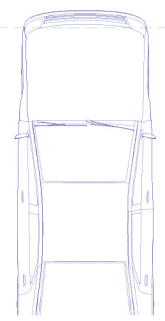
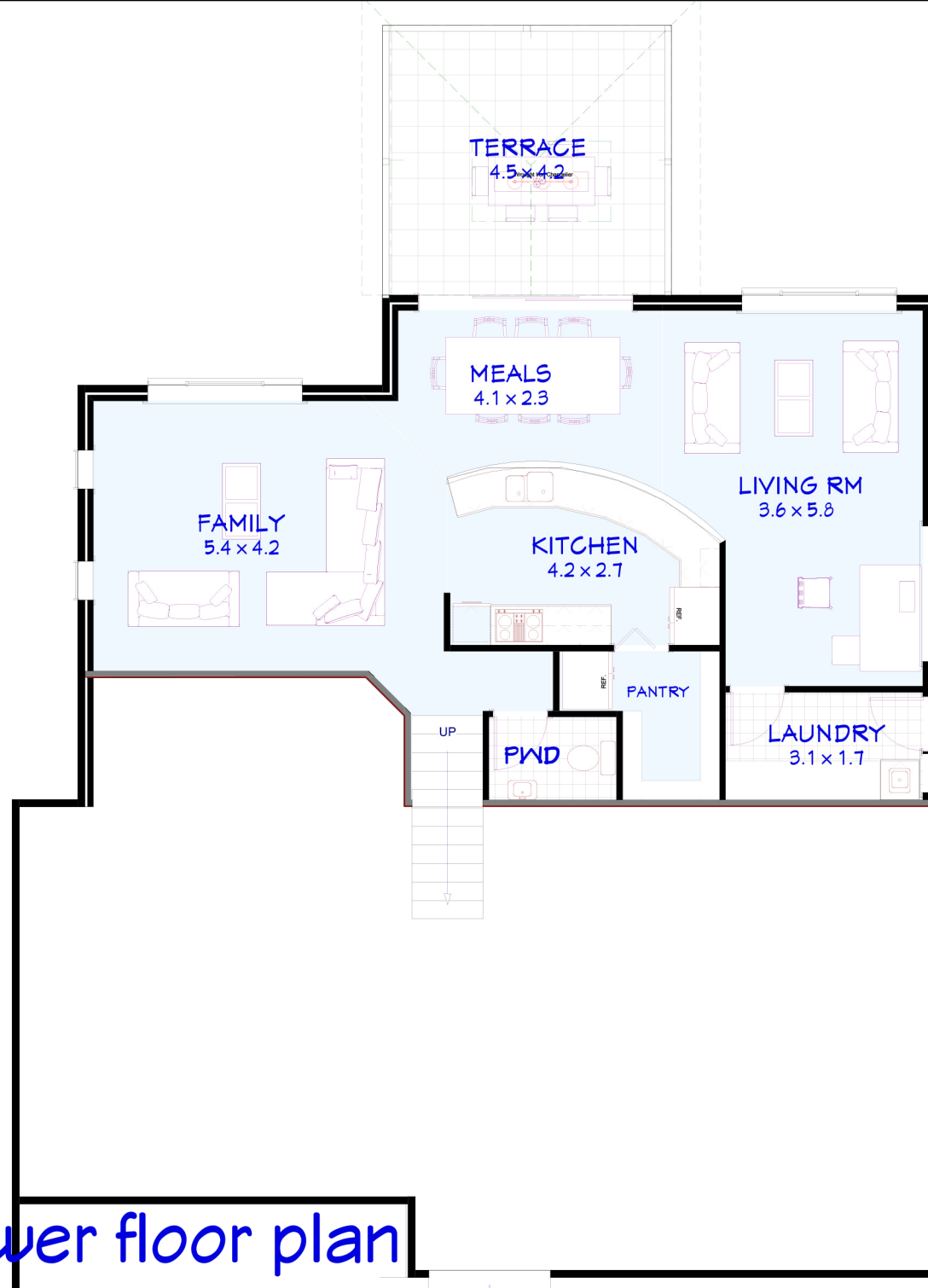


upper floor plan

Garage	39.30m <sup>2</sup>
Porch	5.00m <sup>2</sup>
Upper Living	157.94m <sup>2</sup>
Lower Terrace	18.72m <sup>2</sup>
Lower Living Area	89.33m <sup>2</sup>
<b>TOTAL Floor area</b>	<b>310.29m<sup>2</sup></b>





lower floor plan